

Blu(fab)

INNOVATIVE
SOLUTIONS
AND OFF-SITE
CONSTRUCTION

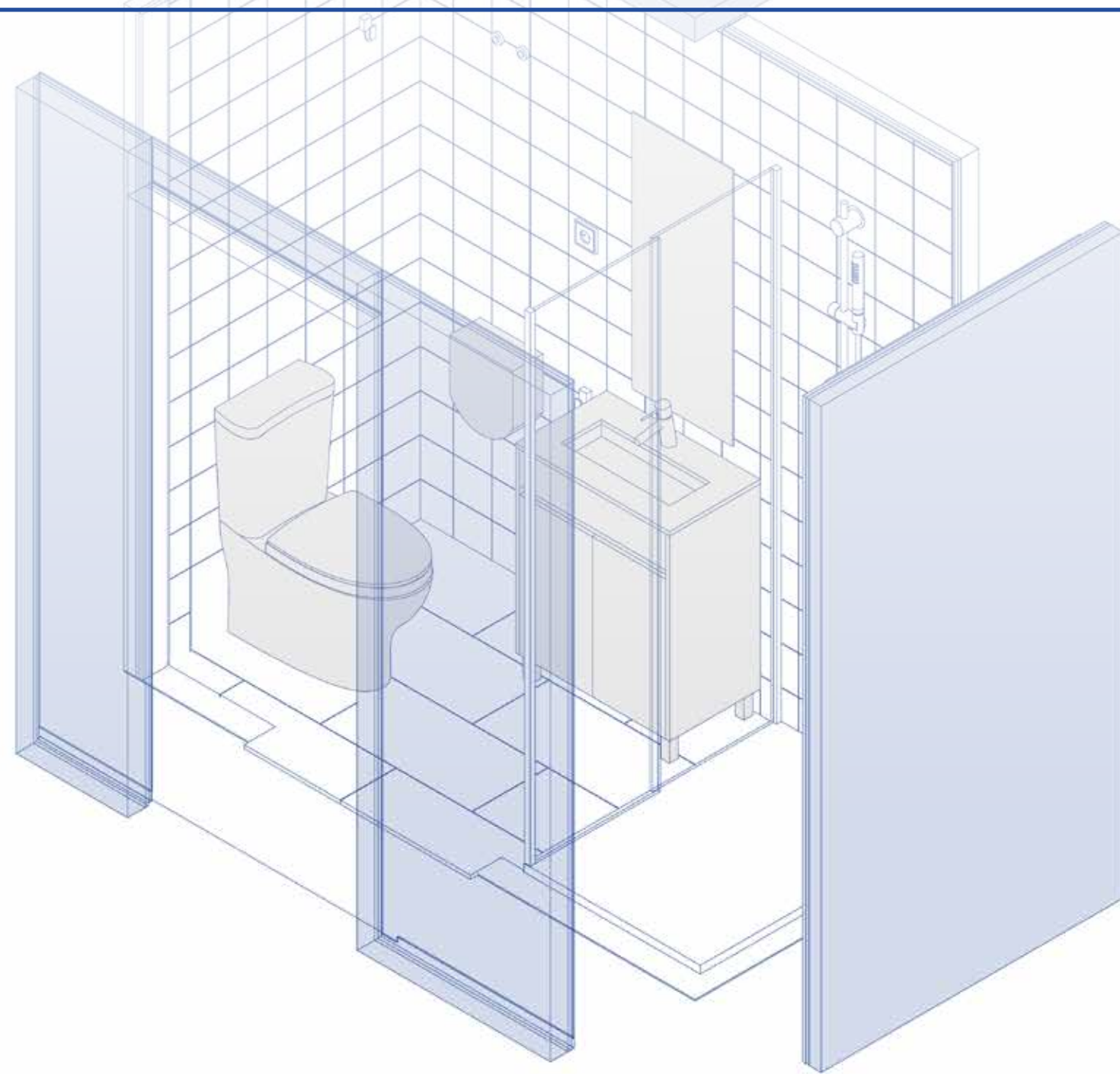
Blufab



Blufab is the off-site construction unit from the Casais Group. It offers innovative industrialised construction, focused on efficiency, sustainability and quality. Blufab is transforming the sector by building resilient infrastructures, promoting inclusive and sustainable industrialisation in addition to optimising construction processes through the proposal of modular solutions for various building components.



3D Solution



The innovative three-dimensional concept offers a complete and integrated solution with MEP (Mechanical, Electrical and Hydraulic) infrastructures. This plug and play sanitary installation model allows for easy installation on site, providing a finished bathroom, ready for use.



Blufab_A

Dimensions

a → 2,00 m²

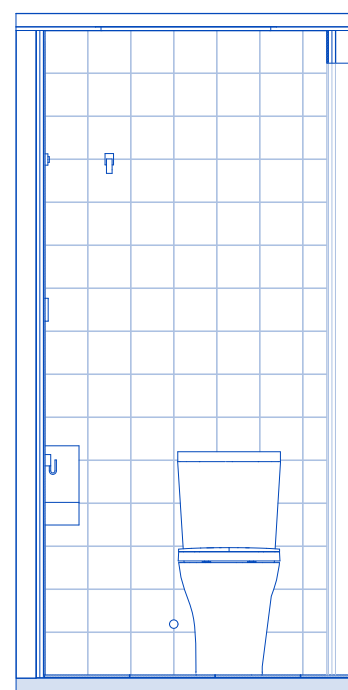
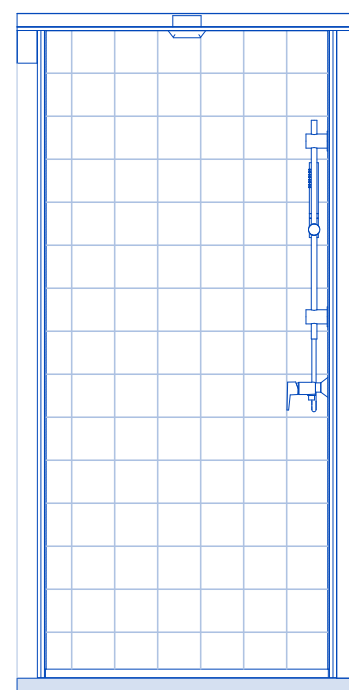
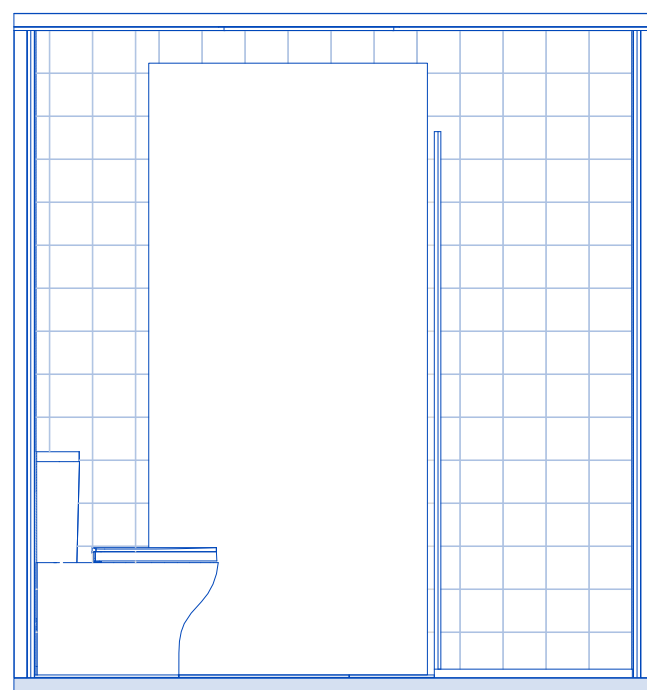
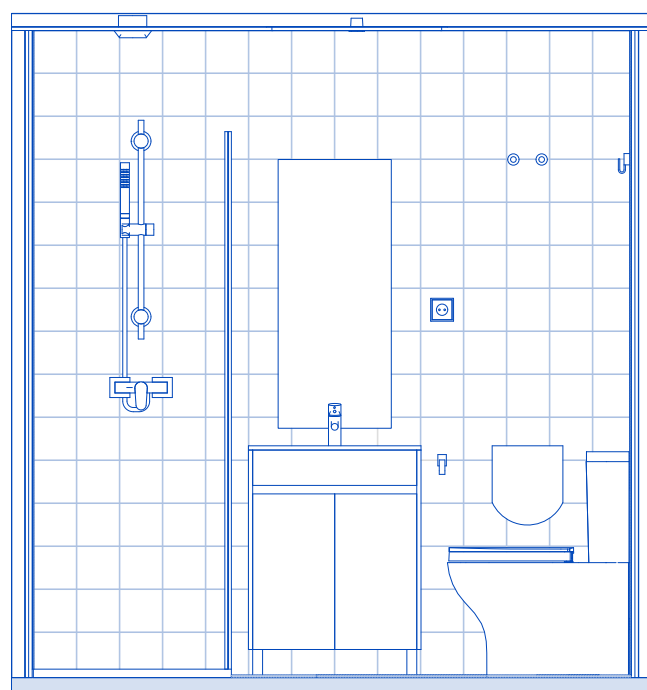
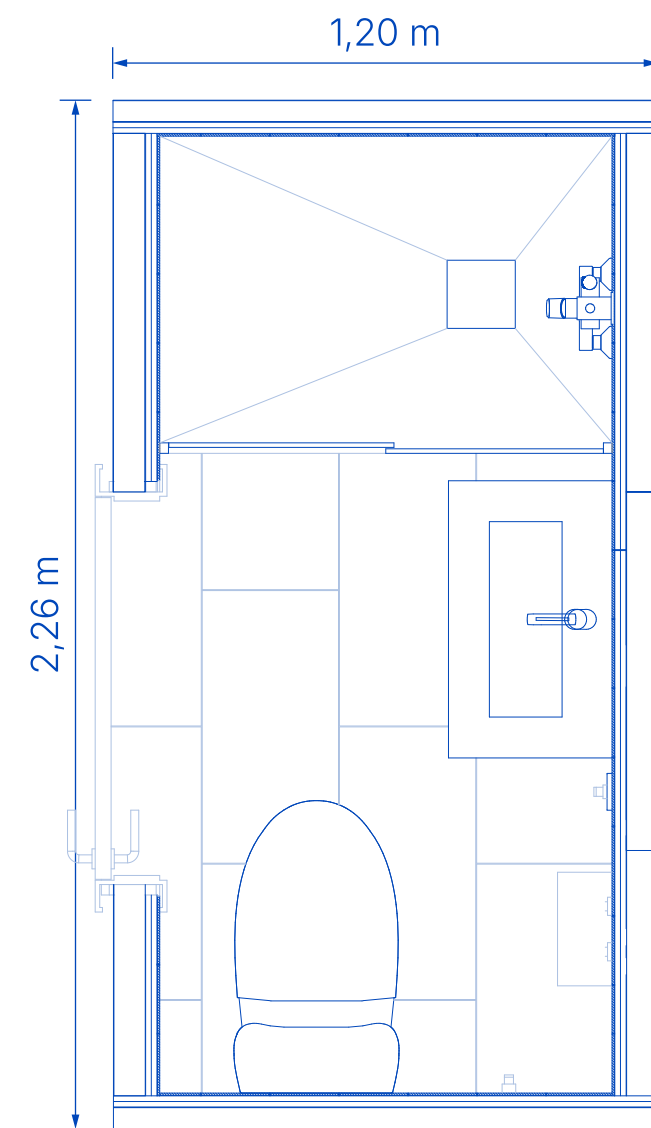
h → 2,30 m

Approx Weight → 1.300 kg

Interior dimensions

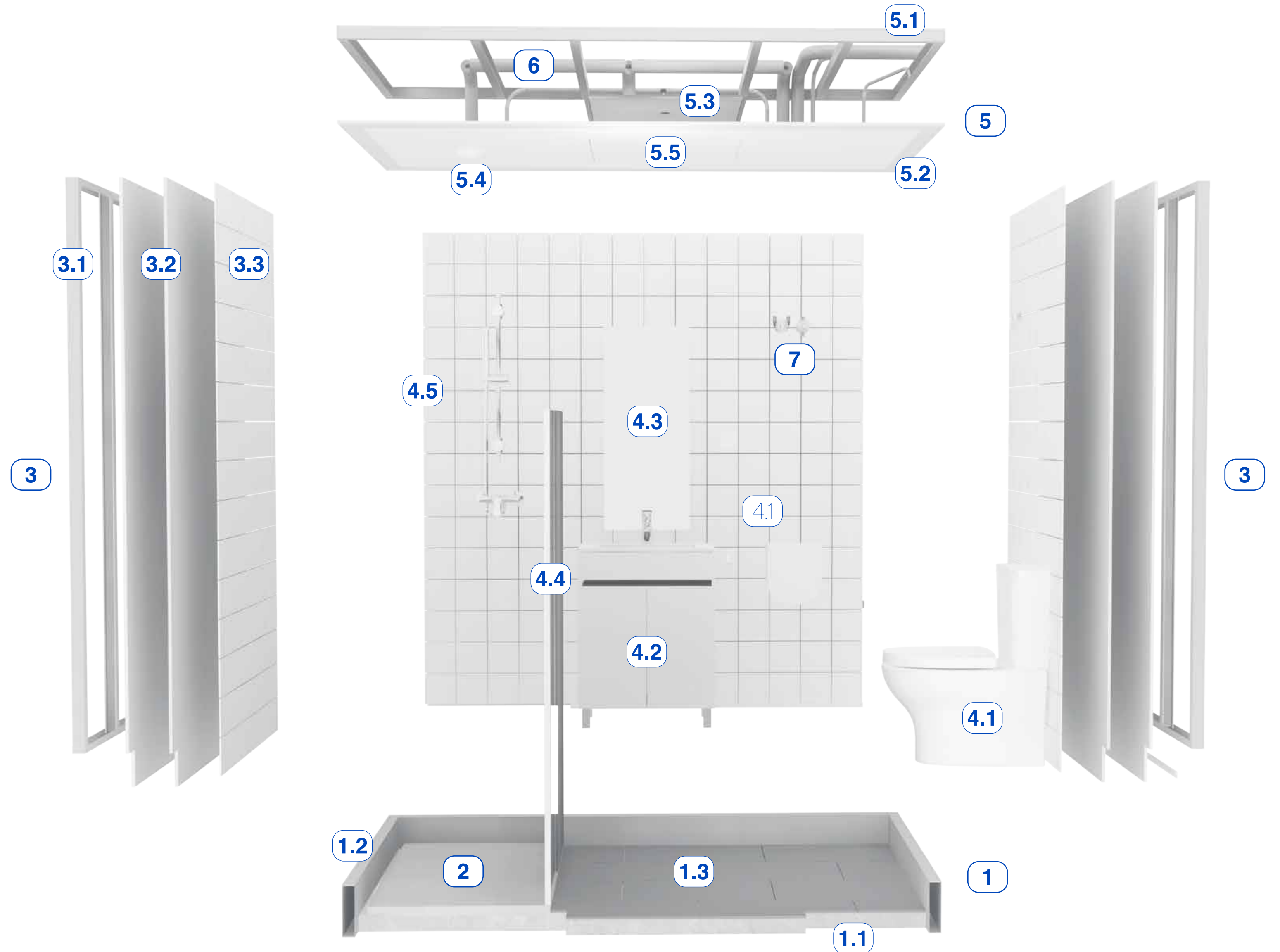
l → 2,00 m

m → 1,00 m



Blufab_A

- 1 Floor composed of a precast concrete base e=60 mm (1.1) with metal perimeter beam (1.2), liquid-fabric waterproofing and 30 × 60 cm ceramic tiles (1.3)
- 2 Integrated 100×70 cm shower tray with vertical drain valve
- 3 Wall panels composed of a M48 structure (3.1), double sign in water-repellent plasterboard (3.2), 15 × 15 cm ceramic tiles (3.3)
- 4 Sanitary ware that includes a compact toilet with vertical flush (4.1), washbasin with flexible siphon, integrated cabinet and mixer, (4.2) mirror (4.3), shower screen (4.4), shower mixer (4.5) and accessories
- 5 Ceiling composed of a M48 metal structure (5.1), painted water-repellent plasterboard sign (5.2), 60 × 60 cm technical trap door (5.3), extraction valve (5.4), lighting (5.5)
- 6 Hydraulic infrastructure for connection to the general network
- 7 Stop valves



Blufab_B

Dimensions

a → 3,50 m²

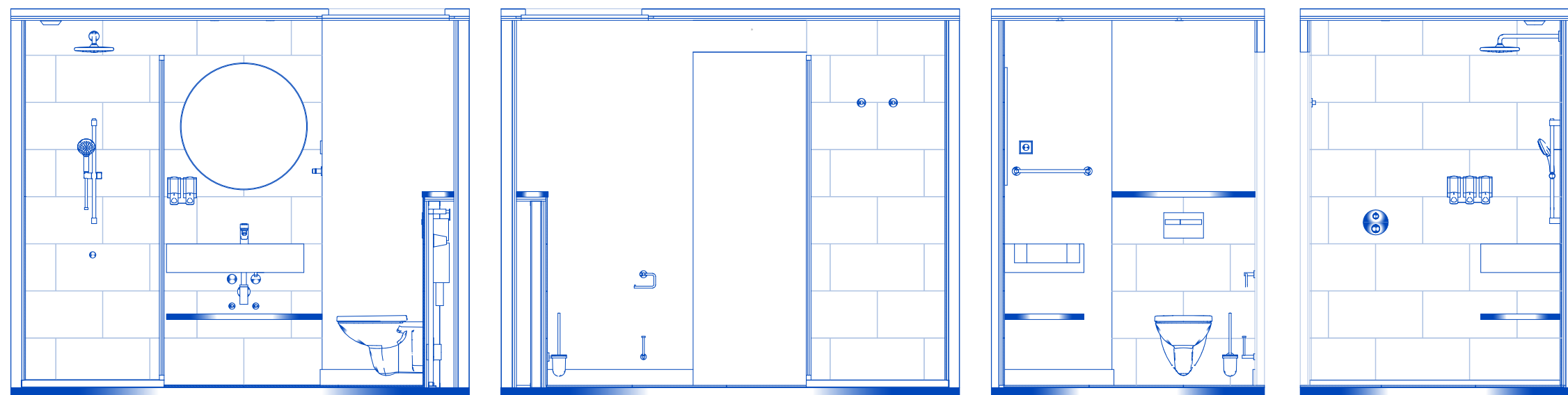
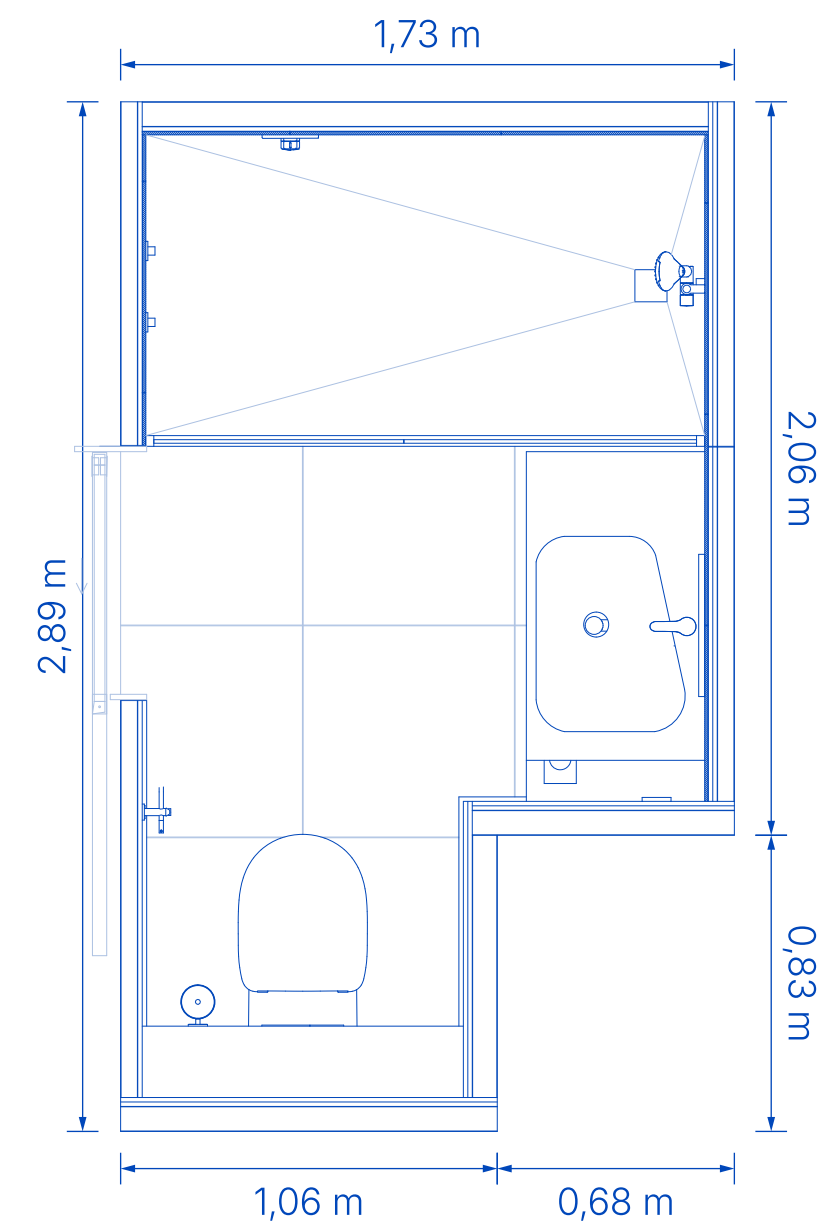
h → 2,30 m

Approx Weight → 2.000 kg

Interior dimensions

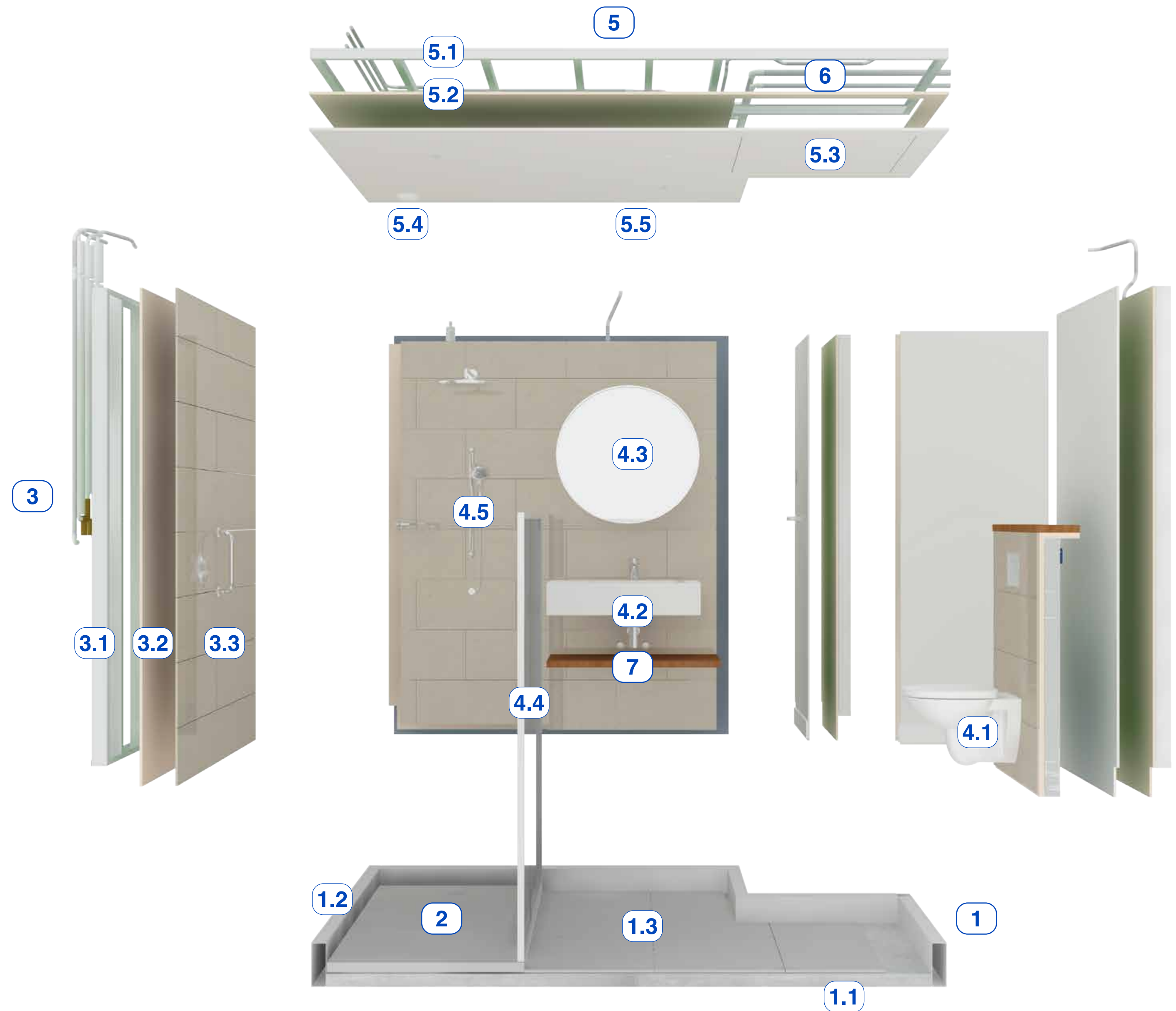
l → 2,60 m

m → 1,50 m



Blufab_B

- 1 Floor composed of a precast concrete base e=60 mm (1.1) with metal perimeter beam (1.2), liquid-fabric waterproofing and 60 × 60 cm ceramic tiles (1.3)
- 2 Integrated 150 × 70 cm shower tray with siphoned drain valve
- 3 Wall panels composed of a M40 structure (3.1), double sign in water-repellent plasterboard (3.2), 30 × 60 cm ceramic tiles (3.3)
- 4 Sanitary ware that includes a wall-mounted toilet (4.1), wall-mounted washbasin with stainless steel siphon and mixer (4.2) mirror (4.3), shower mixer (4.4) and accessories
- 5 Ceiling composed of a M48 metal structure (5.1), double sign in painted water-repellent plasterboard (5.2), 60 × 60 cm technical trap door (5.3), extraction valve (5.4), lighting (5.5)
- 6 Hydraulic infrastructure for connection to the general network
- 7 Stop valves



Blufab_C

Dimensions

a → 4,70 m²

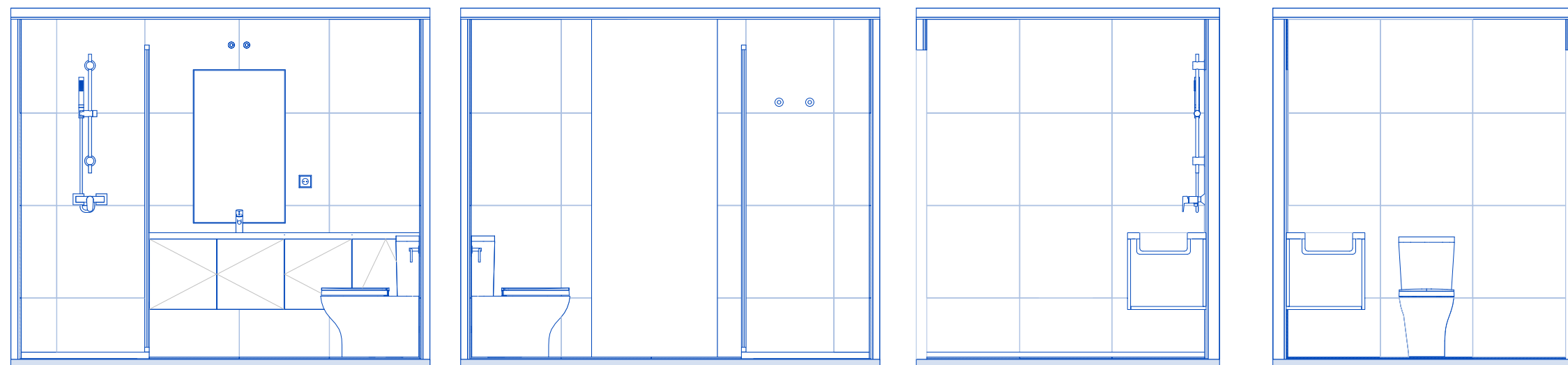
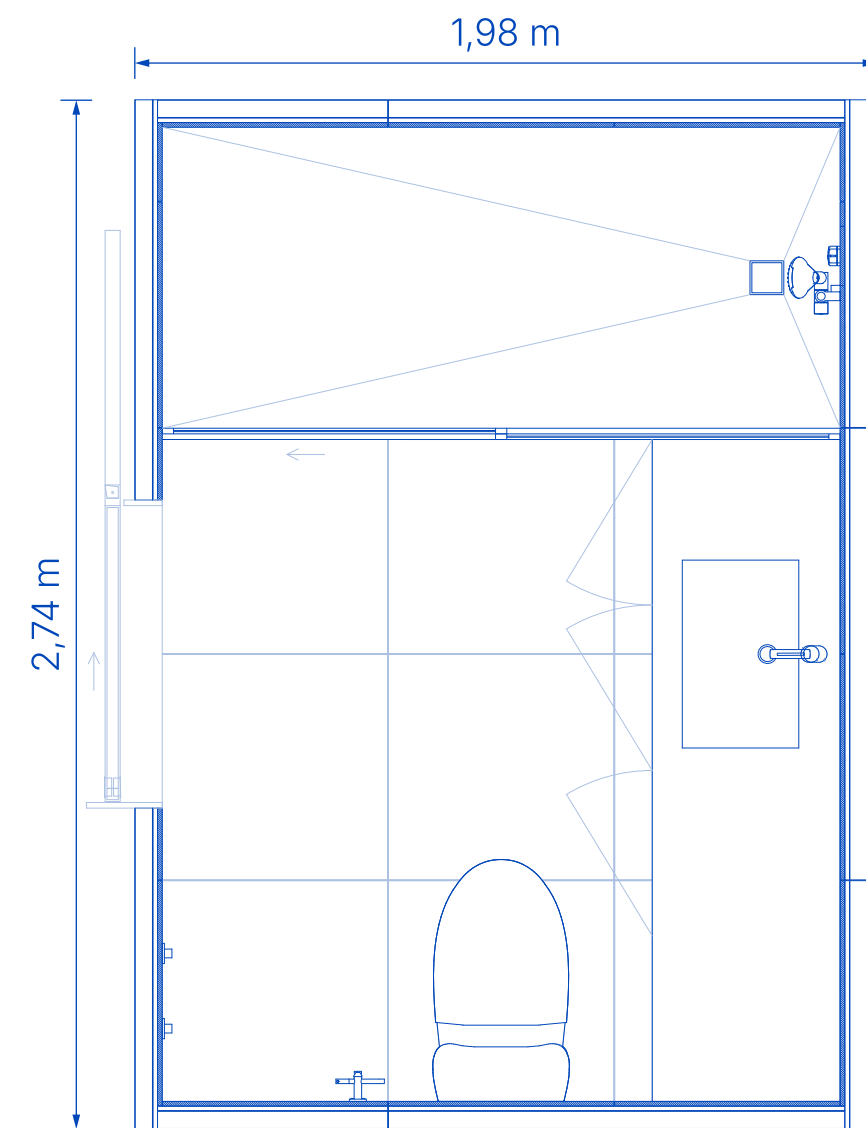
h → 2,40 m

Approx Weight → 2.200 kg

Interior dimensions

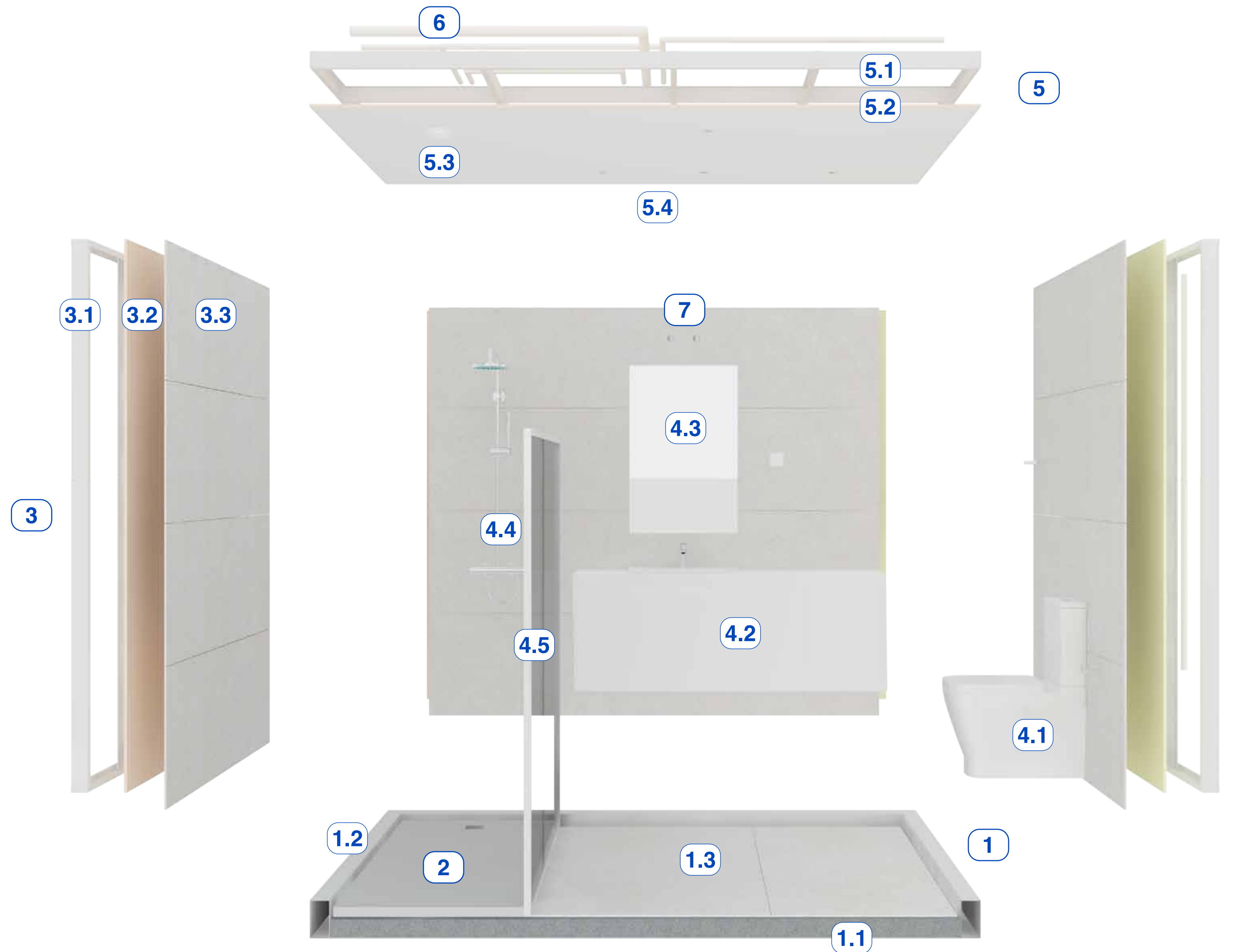
l → 2,60 m

m → 1,80 m



Blufab_C

- 1 Floor composed of a precast concrete base e=80 mm (1.1) with metal perimeter beam (1.2), liquid-fabric waterproofing and 60 × 60 cm ceramic tiles (1.3)
- 2 Integrated 180 × 80 cm shower tray with drain valve;
- 3 Wall panels composed of a M48 and M70 structure (3.1), simple sign in water-repellent and fibrous plasterboard (3.2), 60 × 60 cm ceramic tiles (3.3)
- 4 Sanitary ware that includes compact toilet with horizontal flush (4.1), unit with integrated washbasin and mixer (4.2), mirror (4.3), shower mixer (4.4), shower enclosure (4.5) and accessories
- 5 Ceiling composed of a M48 metal structure (5.1), painted water-repellent plasterboard sign (5.2), extraction valve (5.3), lighting (5.4)
- 6 Hydraulic infrastructure for connection to the general network
- 7 Stop valves



Blufab_D

Dimensions

a → 5,00 m²

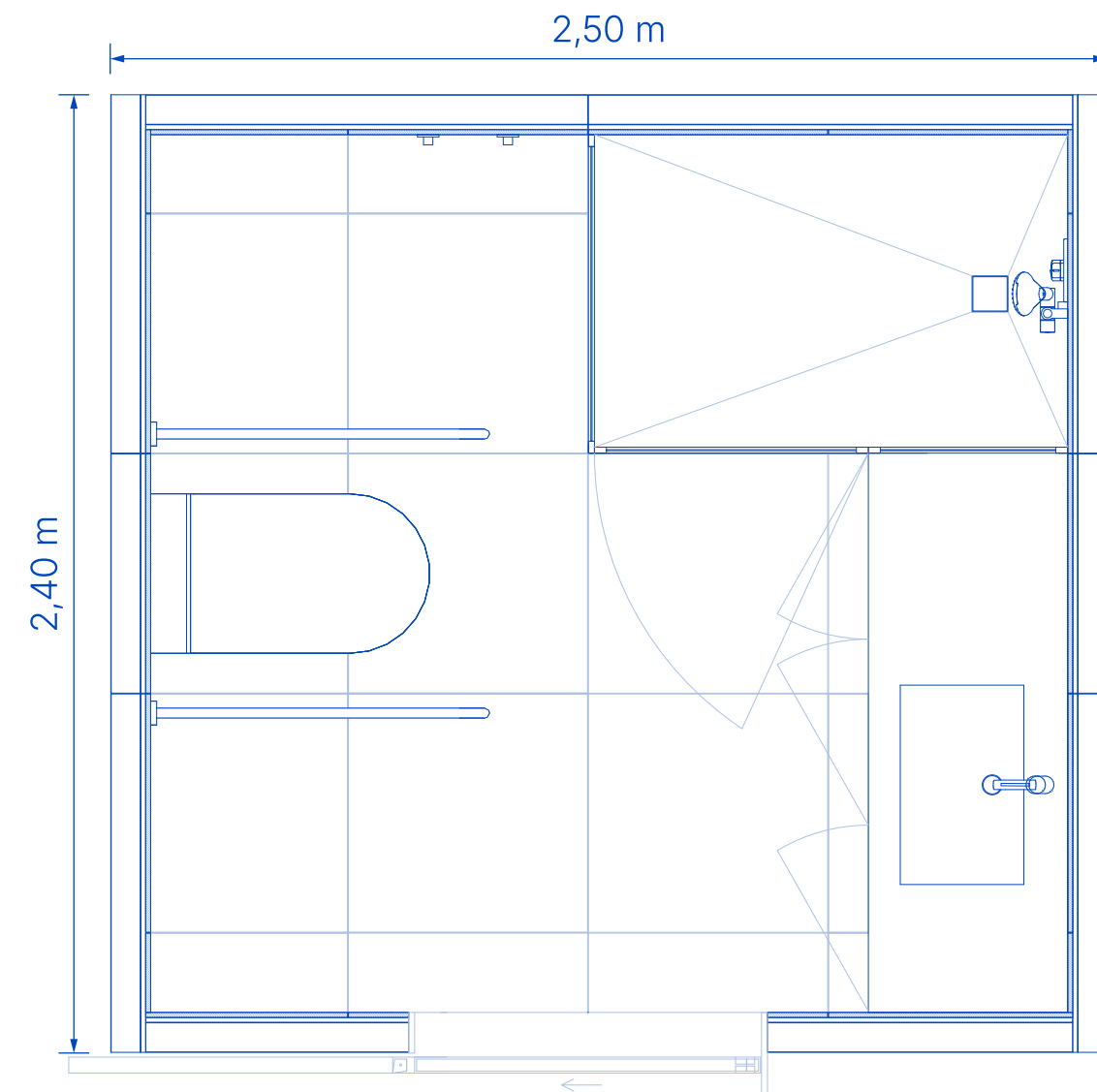
h → 2,40 m

Approx Weight → 2.500 kg

Interior dimensions

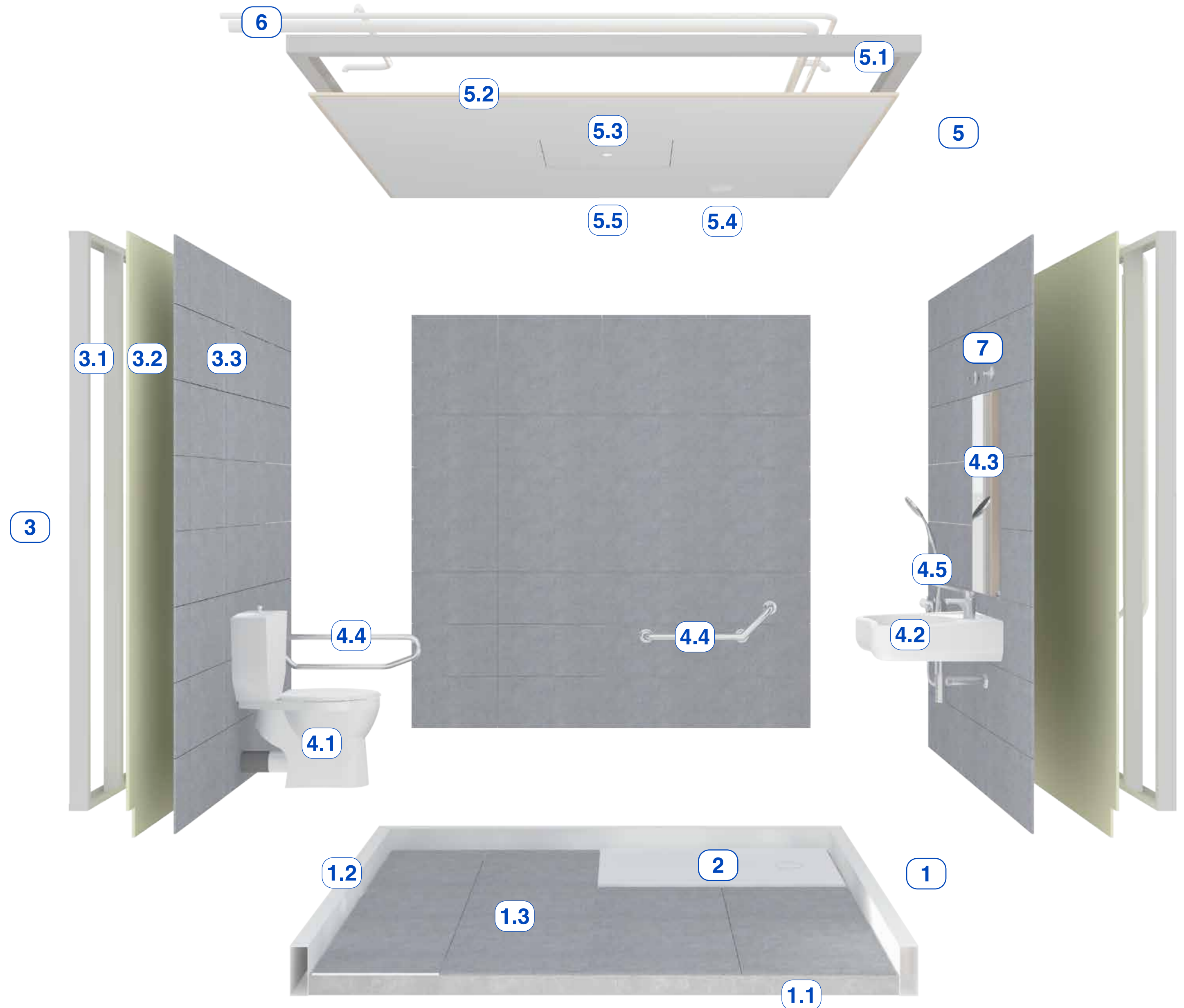
l → 2,30 m

m → 2,20 m



Blufab_D

- 1 Floor composed of a precast concrete base e=80 mm (1.1) with metal perimeter beam (1.2), liquid-fabric waterproofing and 60 × 60 cm ceramic tiles (1.3)
- 2 Integrated 120 × 80 cm shower tray with vertical drain valve
- 3 Wall panels composed of a M70 structure (3.1), simple sign in water-repellent and fibrous plasterboard (3.2), 30 × 60 cm ceramic tiles (3.3)
- 4 Sanitary ware that includes a compact toilet with vertical flush (4.1), wall-mounted washbasin with stainless steel siphon and mixer (4.2), mirror (4.3), support bars (4.4), shower mixer and accessories (4.5)
- 5 Ceiling composed of a M48 metal structure (5.1), painted sign in water-repellent and fibrous plasterboard (5.2), 60 × 60 cm technical trap door (5.3), extraction valve (5.4), lighting (5.5)
- 6 Hydraulic infrastructure for connection to the general network
- 7 Stop valves



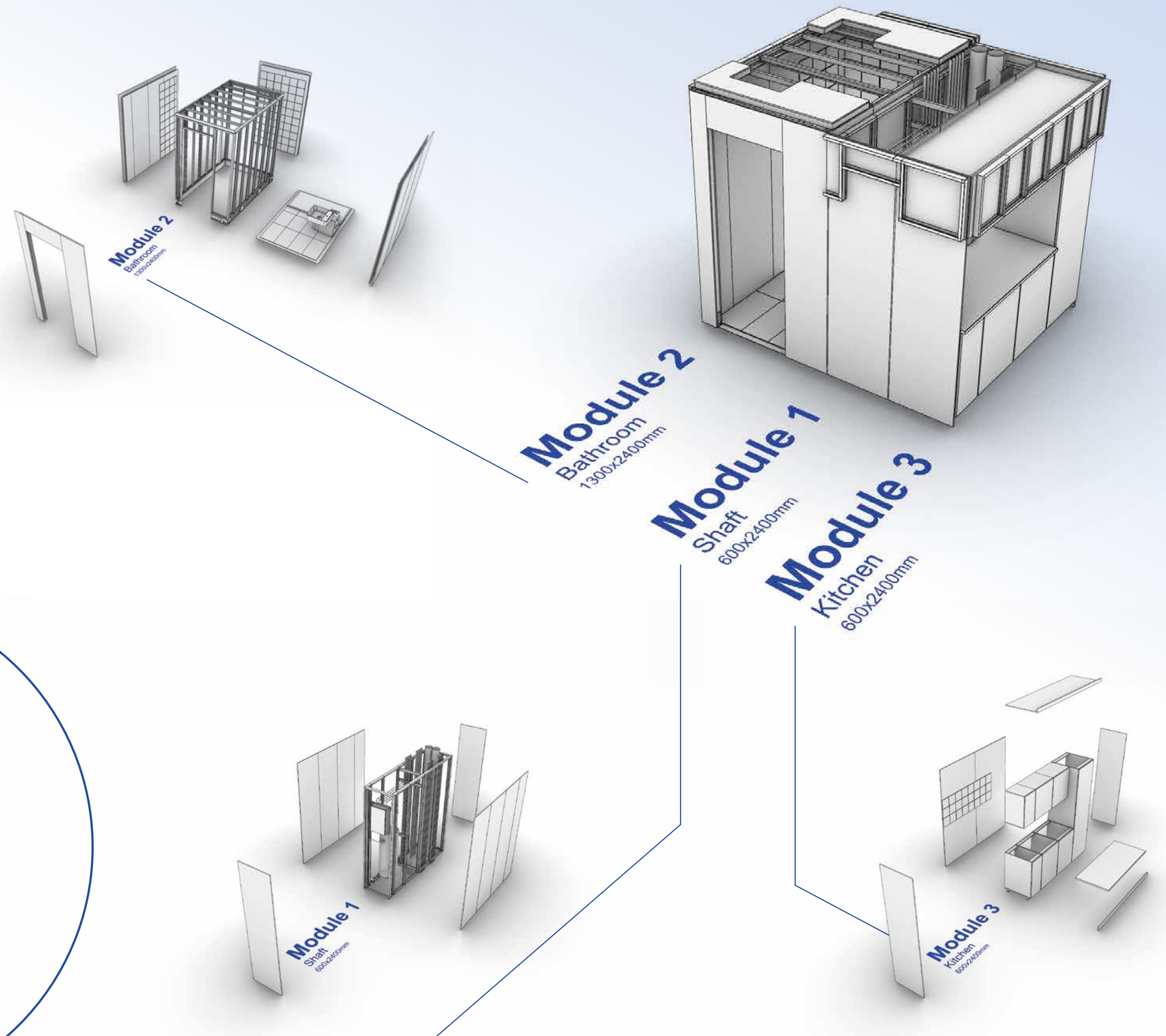
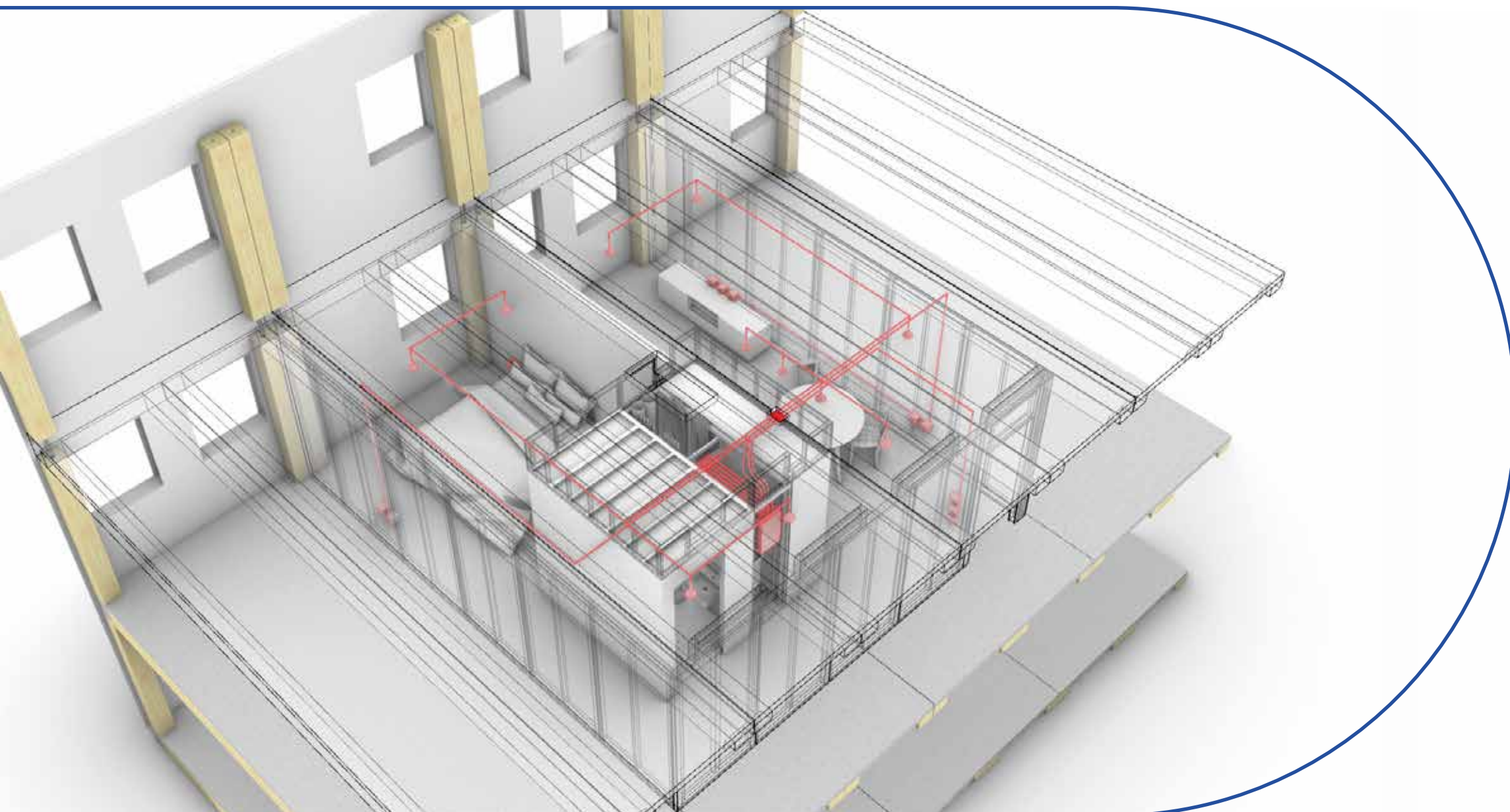
Blufab Modular Prefab_01



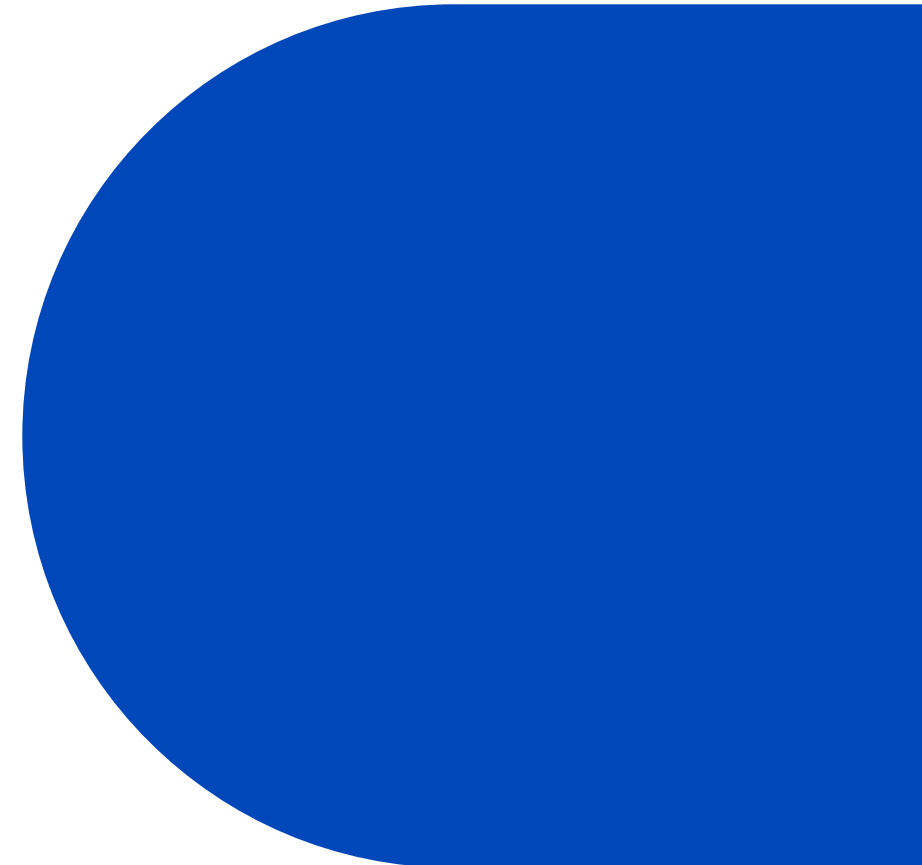
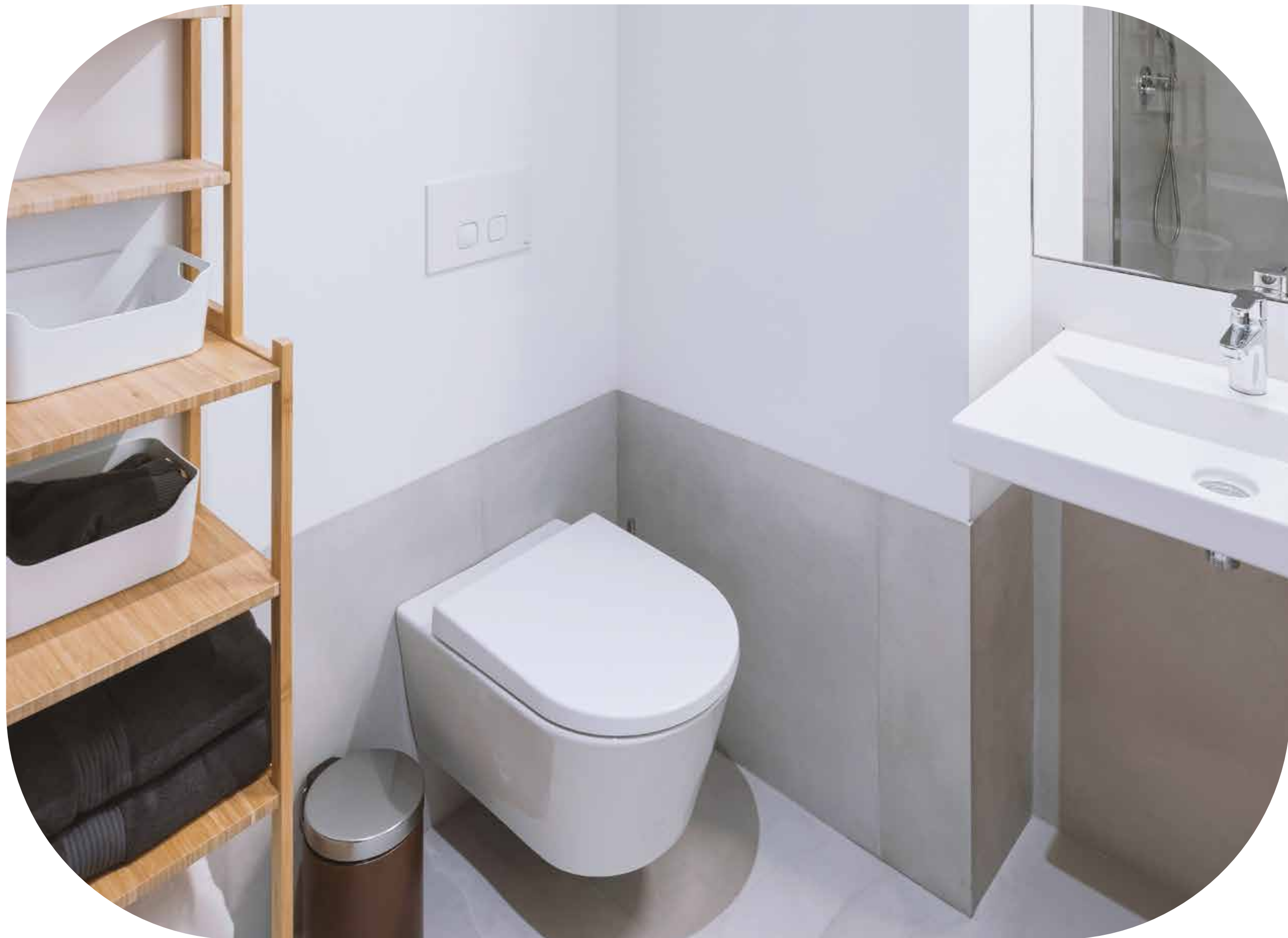
A fully industrialised solution that combines the most complex elements of a housing unit, namely the sanitary facilities, the kitchen and the technical area, all a single volume, for the optimal use of space and resources. This element can also be combined with folding walls that provide the remainder of interior compartmentalisation.

Blufab Modular Prefab_01

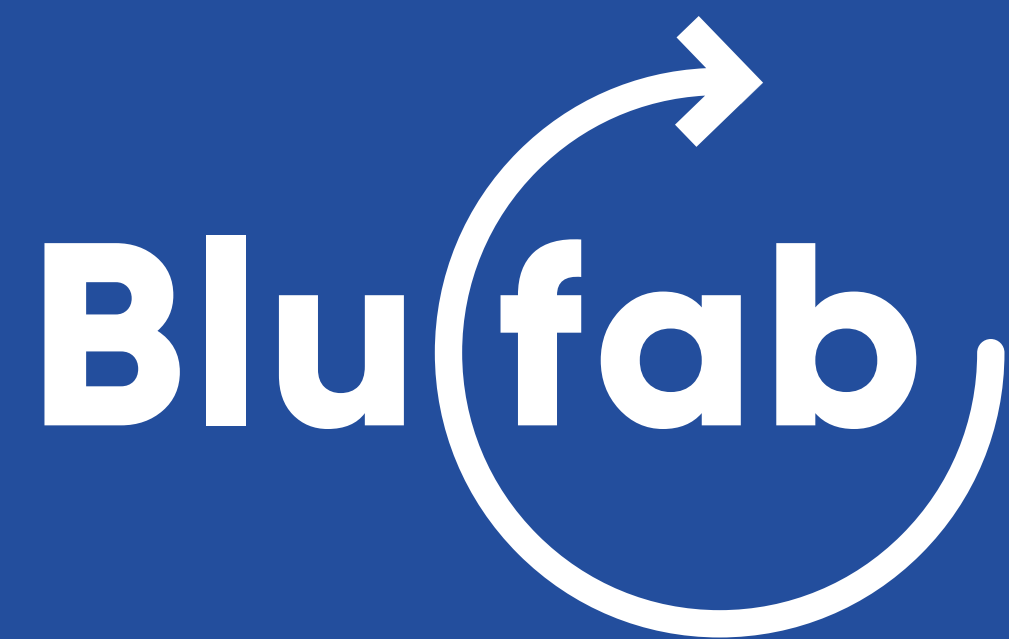
A fully industrialised solution that combines the most complex elements of a housing unit, namely the sanitary facilities, the kitchen and the technical area, all a single volume, for the optimal use of space and resources. This element can also be combined with folding walls that provide the remainder of interior compartmentalisation.



MORE THAN 4 000 SANITARY FACILITIES PRODUCED







Together we
can build a more
sustainable tomorrow!

Blufab.pt

